

# Pavane, 'The Earle of Salisbury' for String Quartet

William Byrd (1542-1623)

arr. M. Kamada

Violin I

Violin II

Viola

Violoncello

7 **A**

14 **B**

21 **C**

27

The image shows a musical score for a string quartet, specifically a pavane by William Byrd. The score is arranged for Violin I, Violin II, Viola, and Violoncello. It is in common time (C) and consists of 27 measures. The score is divided into four systems. The first system (measures 1-6) shows the initial entry of the instruments. The second system (measures 7-13) is marked with a box 'A' and contains a first ending. The third system (measures 14-20) is marked with a box 'B' and contains a second ending. The fourth system (measures 21-27) is marked with a box 'C' and contains a third ending. The score is written in a standard musical notation with treble clefs for Violin I and II, and bass clefs for Viola and Violoncello.

Violin I

# Pavane, 'The Earle of Salisbury' for String Quartet

William Byrd (1542-1623)

arr. M. Kamada

7 **A**

15 **B**

22 **C**

28

Violin II

# Pavane, 'The Earle of Salisbury' for String Quartet

William Byrd (1542-1623)

arr. M. Kamada

8 **A** Vln. I

15 **B** Vln. I

22 **C** Vln. I

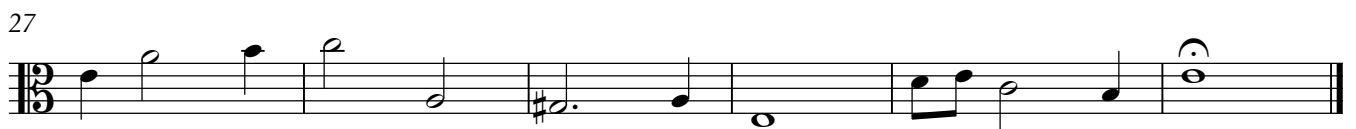
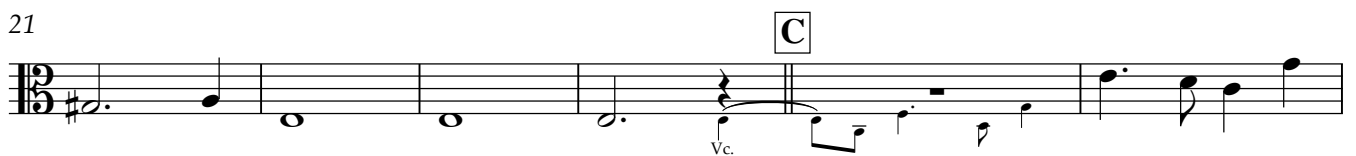
28 Vln. I

Viola

# Pavane, 'The Earle of Salisbury' for String Quartet

William Byrd (1542-1623)

arr. M. Kamada



Violoncello

## Pavane, 'The Earle of Salisbury' for String Quartet

William Byrd (1542-1623)

arr. M. Kamada

